



Unit 626, Kilshane Avenue, North West Business Park, Ballycoolin, Dublin 15, Ireland
Telephone: +353 1 8612 632 Fax: +353 1 8612 647 email:sales@driveriteltd.com
Web: www.driveriteltd.com

VOLKSWAGEN FULL AIR **T5 CHASSIS TYPE** **W21-760-3481**

INSTALLATION INSTRUCTIONS

All work should be carried out in a properly equipped workshop with due regard to Health and Safety Regulations. No further reference to Health and Safety Regulations will be made, but they must be considered at all times.

The kit should be opened and the contents checked against the parts list provided. Identify the various components and familiarise yourself with them using drawings and information provided.

WARNING

Do not inflate this assembly when it is unrestricted. When installed, a minimum of 10 psi should be maintained in the air bellows at all times to avoid damage. Do not inflate beyond 100 psi.

IMPORTANT

This kit is not designed to increase the GVW of your vehicle. For your safety and to prevent possible damage to your vehicle, do not exceed the maximum load recommended by the vehicle manufacturer.










PARTS LIST

Description	Quantity
Lower Positioner	2
Upper Bracket (LHS)	1
Upper Bracket (RHS)	1
Lower Bracket (LHS)	1
Lower Bracket (RHS)	1
Bellow Insert (LHS)	1
Bellow Insert (RHS)	1
M10 x 40 socket head bolt	8
M10 Flat Washer	8
M10 Spring Washer	8
M10 Inserts	4

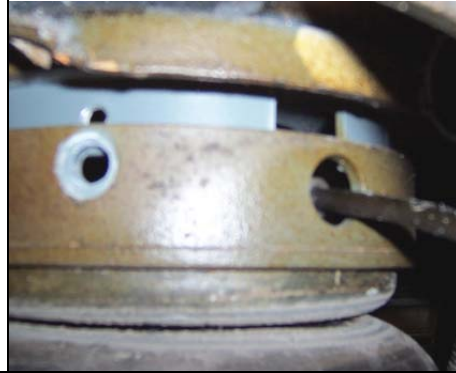
Description	Quantity
M8 x 20 bolts	4
M8 Flat Washers	4
M8 Spring Washers	4
Cable Ties	10
¼ Tee Piece	1
¼ Inflation Valve	2
¼ Elbow	2
5/16 Flat Washer	4
¼ Tubing	18 ft.
Style 26 Air Bellows	2
15x10, 5x2 Washer	4

1 INSTALLATION

<p>Remove the original coil springs from the rear axle. Unscrew and remove the bolt at the lower end of the shock absorber. This bolt will be reused later. The vehicle is raised and the coil spring is removed. Take out any rubber seats which were used in the original assembly.</p>	
<p>The Upper Bracket is attached by using the M10 x 40 bolts and the M10 inserted. Rotate the bracket so the circular tube sits concentrically in the centre of the bracket.</p>	
<p>Ensure that the washer 15x10, 5x2 is inserted as a spacer between the bracket and the insert.</p>	

<p>Now place the lower bracket on the axle in such a way that the two flanges sit at the original opening in the axle. The flanges should have the same profile as the hole outlines in the axle. Make sure that no cables or lines are squeezed or damaged in the process.</p>	 A close-up photograph showing a person's hand placing a silver metal lower bracket onto a dark axle assembly. The bracket has two flanges that are being aligned with the axle's openings. A black cable is visible in the background.
<p>The attachment of the lower brackets to the axle takes place in front of each of the flanges. The Lower Positioner is inserted inside the axle and placed against the flange. A M10 x 40 bolt is then used to secure each flange to the Lower Positioner. The Lower Bracket is now fastened to the axle but the bolts are not fully tightened at this point.</p>	 A close-up photograph showing a hand using a bolt to secure the lower bracket to the axle. The bolt is being inserted through the flange and the lower positioner. The lower positioner is a grey plastic component that fits into the axle's opening.
<p>The entire base of the lower bracket should be sitting on the axle.</p>	 A close-up photograph showing the lower bracket fully seated on the axle. The bracket is now positioned in front of the axle, and the lower positioner is visible inside the axle's opening. The entire assembly is now ready for the final tightening of the bolts.
<p>Align the lines and cables back in their original position</p>	 A close-up photograph showing the lower bracket and cables aligned. The bracket is now fully seated on the axle, and the cables are being moved back into their original positions. The lower positioner is visible inside the axle's opening.

Attach the upper bracket of the air bellow to the fixed bracket so that it sits inside the fixed bracket. Ensure that the air tube is routed correctly as can be seen in the diagram.



The shock absorbers are now re-fastened. In order to aid this process the air bellows can be inflated until the desired position is reached. The M8 x 20 bolts are now bolted in place. The two bolts attaching the lower bracket to the axle can now be fully tightened. In addition all bolts can be fully fastened.



FAILURE TO MAINTAIN MINIMUM PRESSURE WILL VOID YOUR WARRANTY