

INSTALLATION INSTRUCTIONS

Congratulations - your new air helper springs are quality products capable of improving the handling and comfort of your vehicle. As with all products, proper installation is the key to obtaining all of the benefits your kit is capable of delivering. Please take a few minutes to read through the instructions to identify the components and learn where and how they are used. It is a good idea to start by comparing the parts in your kit with the parts list below.

The heart of the kit is, of course, the air helper springs. Remember that the air helper springs must flex and expand during operation, so be sure that there is enough clearance to do so without rubbing against any other part of the vehicle.

Be sure to take all applicable safety precautions during the installation of the kit. The instructions listed in this brochure and the illustrations all show the right, or passenger's side of the vehicle. To install the left side assembly simply follow the same procedures.

WARNING:

Do not inflate this assembly when it is unrestricted. The assembly must be restricted by the suspension or other adequate structure. Do not inflate beyond 100 P.S.I. Improper use or over inflation may cause property damage or severe personal injury.

Your kit includes separate inflation valves and air lines for each air helper spring. This will allow you to level your vehicle from side to side as well as from front to back. If you would rather have a single valve inflation system, your dealer can supply the required T-fitting.

IMPORTANT!

For your safety and to prevent possible damage to your vehicle, do not exceed the maximum load recommended by the vehicle manufacturer (GVWR). Although your Air Helper Springs are rated at a maximum inflation pressure of 100 psi, this pressure may allow you to carry too great a load on some vehicles. It is best to have your vehicle weighed once it is completely loaded and compare that weight to the maximum allowed. Check your vehicle owner's manual or data plate on driver side door for maximum loads listed for your vehicle.

When inflating your Air Helper Springs, add air pressure in small quantities, checking pressure frequently during inflation. The air spring requires much less air volume than a tire and, therefore, inflates much quicker.

PARTS LIST

AIR SPRING	7689	2	5/16" FLAT WASHER		4
UPPER BRACKET	5587	2	18 ft. TUBING	0938	1
LOWER BRACKET	5588	2	INFLATION VALVE	3032	2
LOWER CLAMP BRACKET	5589	2	MALE FITTING	3046	2
3/8" -16 x 1-1/2" HEX BOLT		8	THERMAL SLEEVE	0899	2
3/8" -16 FLANGED HEX NUT		16	NYLON TIE		6
3/8" -16 x 3/4" FLANGED HEX BOLT		2	CAUTION TAG		2
3/8" -16 x 3-1/2" CARRIAGE BOLT		4			

KIT ASSEMBLY

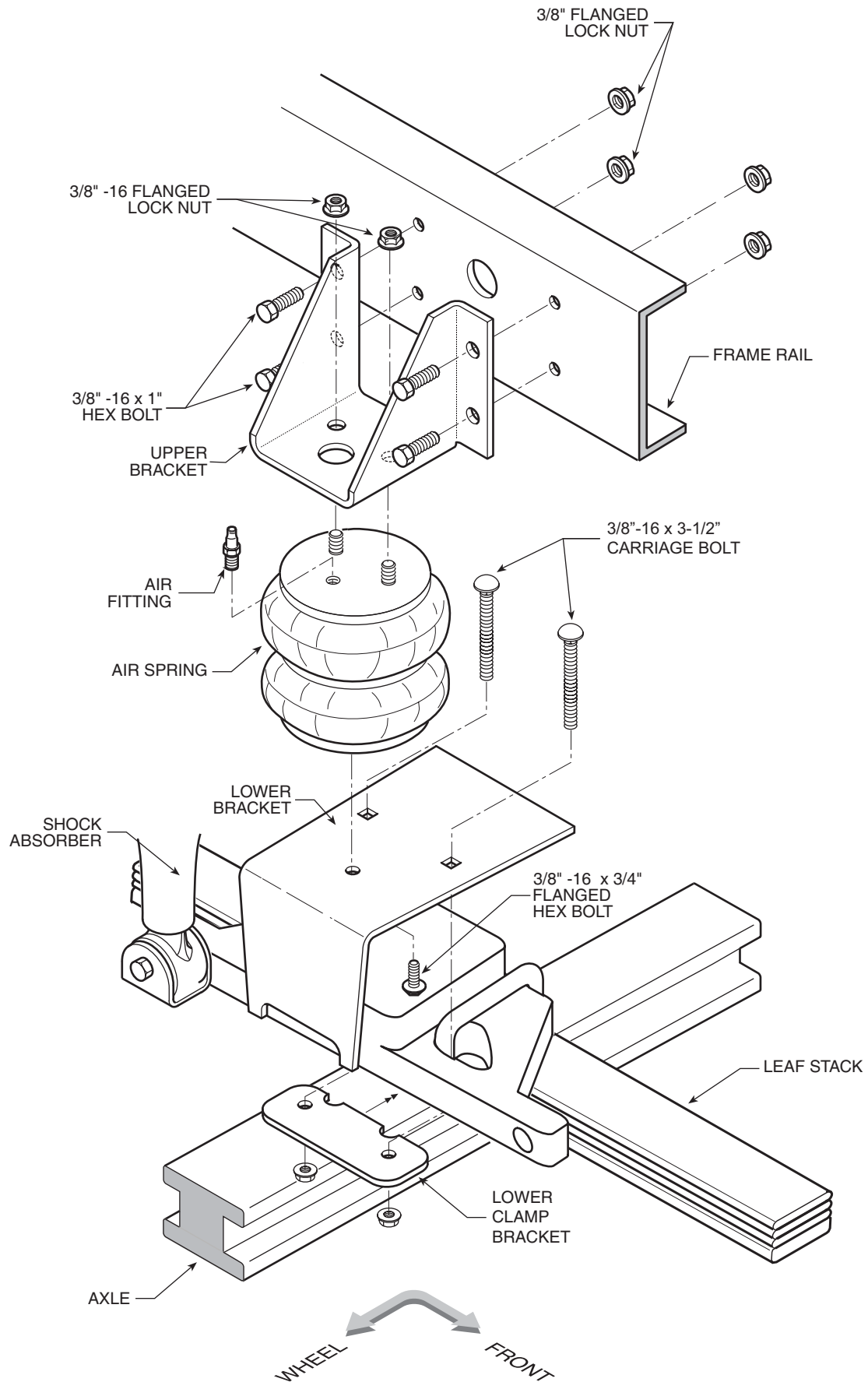


FIGURE "A"

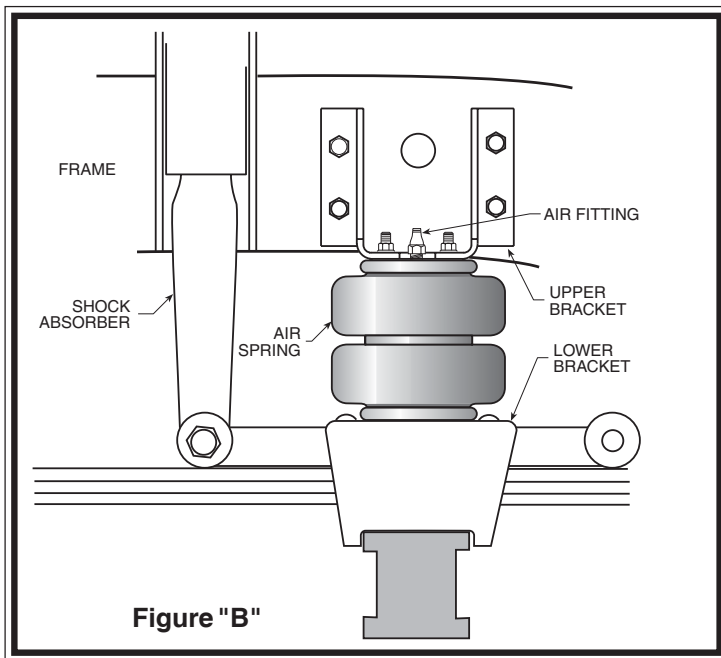


Figure "B"

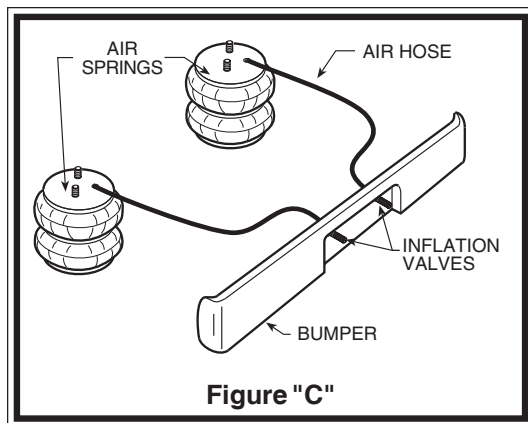


Figure "C"

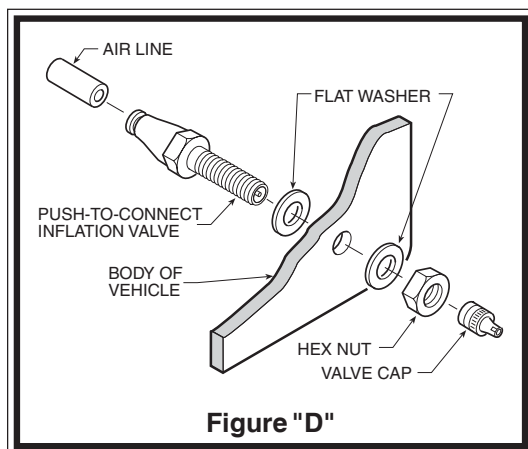


Figure "D"

STEP 1 - PREPARE THE VEHICLE

With the vehicle on a solid, level surface chock the rear wheels. Raise the vehicle by the front axle and remove the front wheels. After the removal of the wheels, lower the vehicle so that the axle rests on jack stands rated for your vehicle's weight. Remove the negative battery cable.

STEP 2 - PRE-ASSEMBLE THE KIT

Pre-assembly will begin with the right, or passenger's side of the vehicle. All illustrations show the right side installation and assembly unless noted otherwise.

Select one air spring from your kit. Install the air fitting as shown in *Figure "A"*. Tighten the air fitting securely to engage the orange thread sealant. Install the upper bracket by inserting the studs on the top of the air spring into the smaller holes, *see Figure "A"*. Using two 3/8" -16 flanged hex nuts, secure the upper bracket to the air spring.

Select one lower bracket and install the 3/8"-16x3-1/2" carriage bolts into the square holes. Attach the lower bracket to the bottom of the air spring using a 3/8" -16 x 3/4" flanged hex bolt. *See Figure "A"*.

STEP 3 - INSTALL THE ASSEMBLY TO THE VEHICLE

Place the assembly on top of the leaf stack centered over the axle. The carriage bolts will pass through the holes in the shock mount, next to the axle U-bolts. Slide the lower clamp bracket into place against the U-bolts with the carriage bolts passing through the holes. Install the 3/8-16 flange lock nuts onto the carriage bolts, securing the assembly to the leaf stack. *See Figure's "A" & "B"*.

Using the upper bracket as a template, mark and drill four 7/16" holes into the frame. Attach the upper bracket to the frame with four 3/8" -16x1" hex bolts and flange lock nuts. *See Figures "A" & "B"*.

STEP 4 - INSTALL THE PASSENGER'S SIDE ASSEMBLY

Follow steps 1 - 3 for the assembly and installation of the left, or driver's side assembly.

STEP 5 - INSTALL THE AIR LINE AND THE INFLATION VALVES

Uncoil the air line tubing and cut it into two equal lengths. **DO NOT FOLD OR KINK THE TUBING.** Try to make the cut as square as possible. Insert one end of the tubing into the fitting installed in the top of the air helper spring. Push the tubing into the fitting as far as possible *see Figure "A"*.

Select a location on the vehicle for the air inflation valves. The location can be on the bumper or the body of the vehicle, as long as it is in a protected location so the valve will not be damaged, but maintain accessibility for the air chuck *see Figure "C"*. Drill a 5/16" hole and install the air inflation valve using two 5/16" flat washers per valve as supports *see Figure "D"*. Run the tubing from the air helper spring to the inflation valve, routing it to avoid direct heat from the engine, exhaust pipe, and away from sharp edges. Thermal sleeves have been provided for these conditions. If a thermal sleeve is required, simply slide the sleeve over the air line tubing to the location requiring protection. The air line tubing should not be bent or curved sharply, as it may buckle. Secure the tubing to the vehicle with the nylon ties provided. Push the end of the air line tubing into the inflation valve as far as possible *see Figure "E"*.

STEP 7 - CHECK THE AIR SYSTEM

