



Unit 626 Kilshane Avenue, North West Business Park, Ballycoolin, Dublin 15, Ireland
 Telephone: +353 1 8612 632, Fax: +353 1 8612 647, email: sales@driveriteltd.com

W21-760-2407

INSTALLATION INSTRUCTIONS

All work should be carried out in a properly equipped workshop with due regard to Health and Safety Regulations. No further reference to Health and Safety Regulations will be made, but they must be considered at all times.

The kit should be opened and the contents checked against the parts list provided.

Identify the various components and familiarise yourself with them using drawings and information provided.

WARNING

Do not inflate this assembly when it is unrestricted. When installed, a minimum of 10 psi should be maintained in the air bellows at all times to avoid damage. Do not inflate beyond 100 psi.

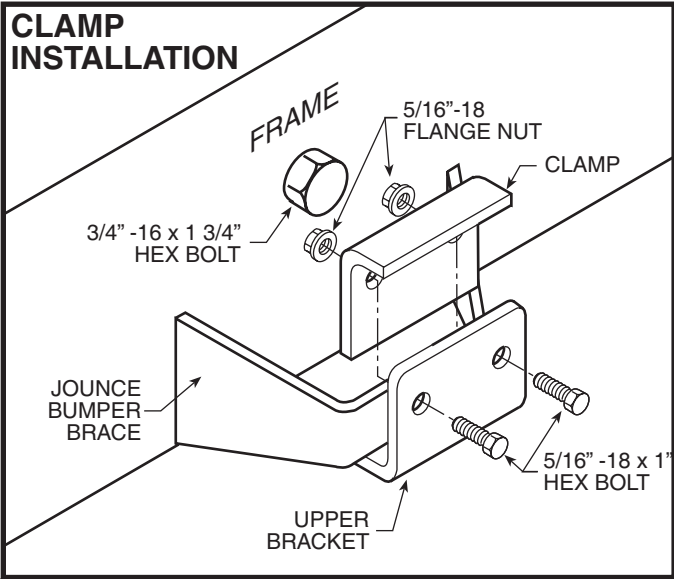
IMPORTANT

This kit is not designed to increase the GVW of your vehicle. For your safety and to prevent possible damage to your vehicle, do not exceed the maximum load recommended by the vehicle manufacturer.

AIR SPRING	6397	2	3/4"-16 X 1 3/4" HEX BOLT	2
UPPER BRACKET	5492	2	3/4" LOCK WASHER	2
UPPER FRAME BRACKET	5491	2	3/4" FLAT WASHER	4
LOWER BRACKET	5494	2	3/4"-16 HEX NUT	2
CLAMP BRACKET	5493	2	5/8"-18 JAM NUT	2
BRACKET STRAP	5086	4	5/16" FLAT WASHER	4
3/8"-16 X 1" HEX HEAD BOLT		8	18 ft. TUBING	0938 1
3/8"-16 FLANGE NUT		16	INFLATION VALVE	3032 2
5/16"-18 X 1" HEX HEAD BOLT		4	AIR FITTING	3048 2
5/16"-18 FLANGE NUT		4	NYLON TIE WRAP	7
3/8"-16 X 3/4" HEX BOLT		2	CAUTION TAG	2
3/8"-16 X 4-1/2" CARRIAGE BOLT		8	THERMAL SLEEVE	2

TOOLS REQUIRED

- HACK SAW
- (2) 1 1/8" END WRENCH
- (2) 9/16" END WRENCHES
- (2) 1/2" END WRENCHES
- 5/16" DRILL BIT
- 3/8" DRILL BIT
- 1/8" DRILL BIT
- ELECTRIC DRILL
- UTILITY KNIFE OR RAZOR BLADE



KIT TO FRAME ASSEMBLY

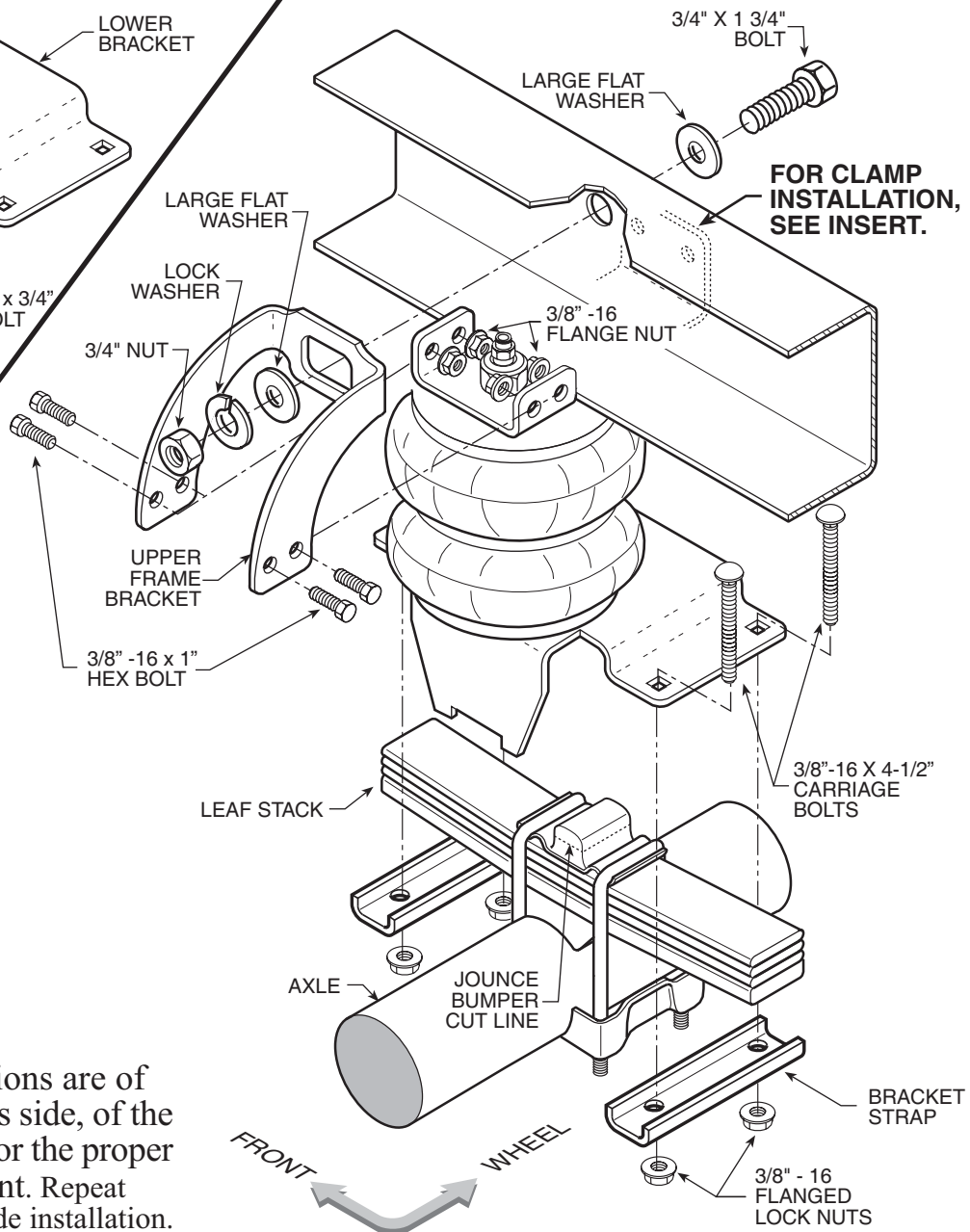
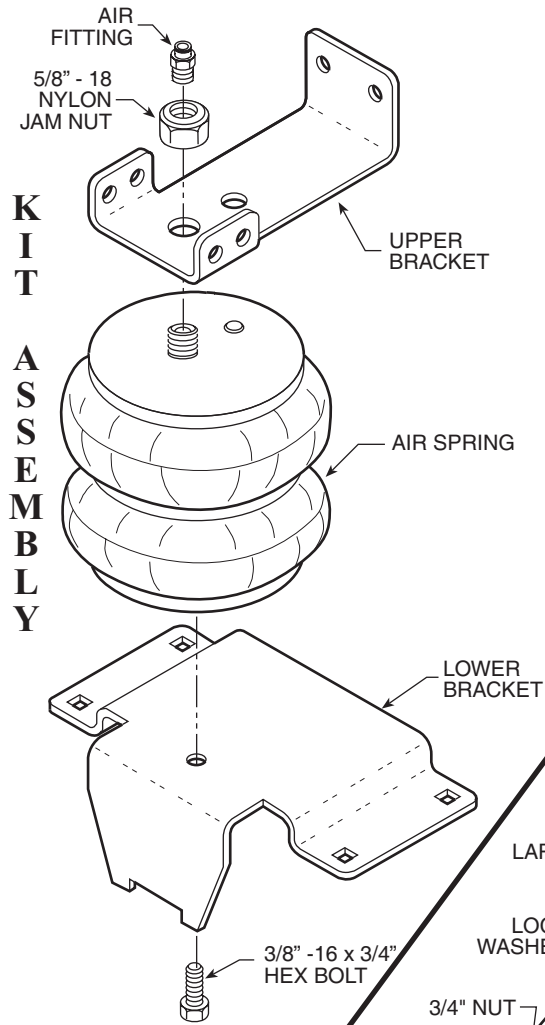
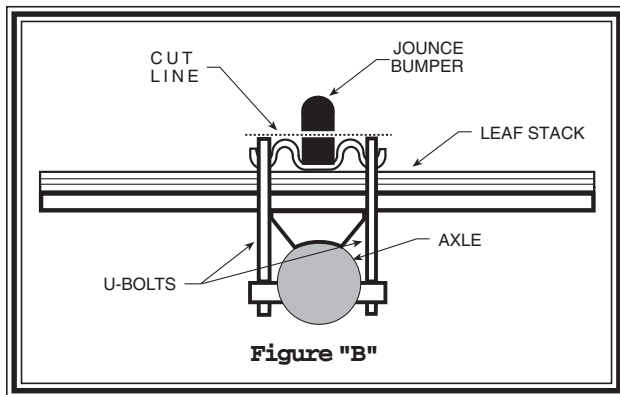


FIGURE "A"

NOTE: Both illustrations are of the right, or passenger's side, of the truck. Refer to step 3 for the proper lower bracket alignment. Repeat instructions for driver's side installation.

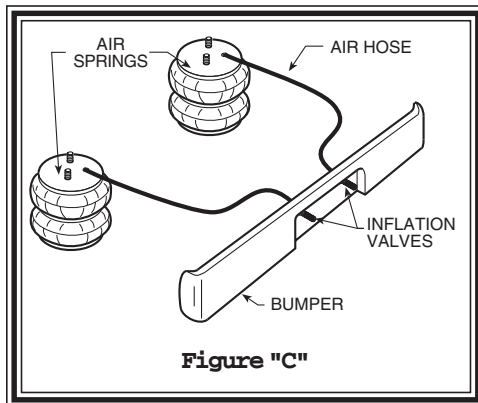


NOTE:

Please read thorough this manual completely before installing the air spring kit to your vehicle.

STEP 1 - PREPARE THE VEHICLE

With the vehicle on a solid, level surface chock the front wheels. Remove the negative battery cable. Raise the vehicle by the axle and remove the rear wheels. After the removal of the wheels lower the vehicle so the axle rests on jack stands rated for your vehicles weight. With a hack saw, cut the jounce bumper located under the frame rail **even with the U-bolts, refer to Figures "A" and "B"**.

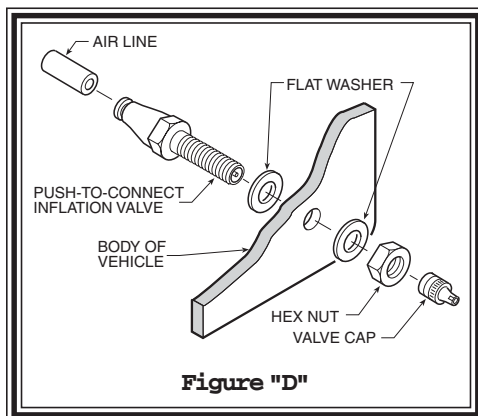


STEP 2 - PRE-ASSEMBLE THE KIT

Select a lower bracket from the kit and one air helper spring from your kit. Attach the lower bracket to the air spring using a 3/8-16 x 3/4" hex bolt, *see Figure "A"*. Next, select an upper bracket from the kit and install the upper bracket to the air spring using 5/8" jam nut. Install the air fitting into the air spring. Tighten the air fitting securely to engage the orange thread sealant, *see Figure "A"*.

STEP 3 - INSTALLING THE ASSEMBLY TO THE VEHICLE

Place the assembly on top of the leaf stack centered over the axle, *see Figure "A"*. Attach the upper frame bracket to the upper bracket with the four 3/8"-16 X 1" hex bolts and hex nuts. Be sure to position the upper frame bracket so the large hole lines up over the large hole on the frame. Install the 3/4"-16 x 1 3/4" hex head bolt, 3/4" washers, 3/4" lock washer, and 3/4"-16 hex nut in the lager hole. Next, install the clamp bracket over the jounce bumper brace and attach it to the upper bracket with two 5/16"-18 X 1" hex bolts and nuts. *See Figure "A"*. Once the position of the upper bracket is fixed, place the 3/8"-16 X 4 1/2" carriage bolts into the square holes in the lower bracket. Place the bracket straps under the leaf spring and attach them to the carriage bolts with the 3/8" flange lock nuts. *See Figure "A"*.



STEP 4 - INSTALLATION OF THE PASSENGER'S SIDE ASSEMBLY

Follow steps 1-3 with reverse orientations for assembly and installation of the passenger's side assembly.

STEP 5 - INSTALL THE AIR LINE AND INFLATION VALVE

Uncoil the airline tubing and cut it into two equal lengths. *DO NOT FOLD OR KINK THE AIRLINE TUBING.* Try to make the cut as square as possible. Insert one end of the airline tubing into the air fitting installed in the top of the air helper spring. Push the airline tubing into the fitting as far as possible. Select a location on the vehicle for the air inflation valves. The location can be on the bumper or the body of the vehicle, as long as it is in a protected location so the valve will not be damaged, but maintain accessibility for the air chuck *see Figure "C" on the next page.* Drill a 5/16" hole and install the air inflation valve using two 5/16" flat washers per valve as supports *see Figure "D"*. Route the airline tubing from the air helper spring to the valve, avoiding direct heat from the engine, exhaust pipe, and away from sharp edges. Thermal sleeves have been provided for these conditions. The airline tubing should not be bent or curved sharply as it may buckle. Secure the airline tubing in place with the nylon ties provided. Push the end of the airline tubing into the inflation valve as illustrated, *see Figure "D"*.

